

BeautiCem SA

Self-Adhesive Resin Cement



BeutiCem SA

Predictable Performance with Effortless Convenience

BeutiCem SA self-etch, self-adhesive, dual-cure resin cement guarantees a simple, fast and reliable adhesion for a variety of substrates ranging from tooth structure (enamel and dentin) to metal, indirect resins and ceramics, without fear of post-operative sensitivity. The dual-cure mechanism anchors the restoration through a stable bond and assures adequate polymerization even in areas with limited light penetration while eliminating the need for phosphoric acid etch.

Designed for...

- All ceramic inlays, onlays, crown and bridge restorations
- Metal and resin posts & cores
- Porcelain fused to metal crown and bridge restorations
- Indirect composite restorations
- CAD/CAM restorations
- Implant supported fixed restorations

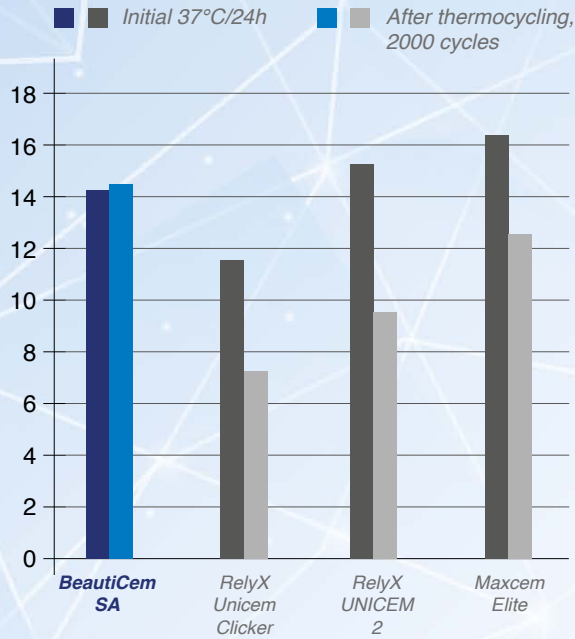


Unique Formulation...

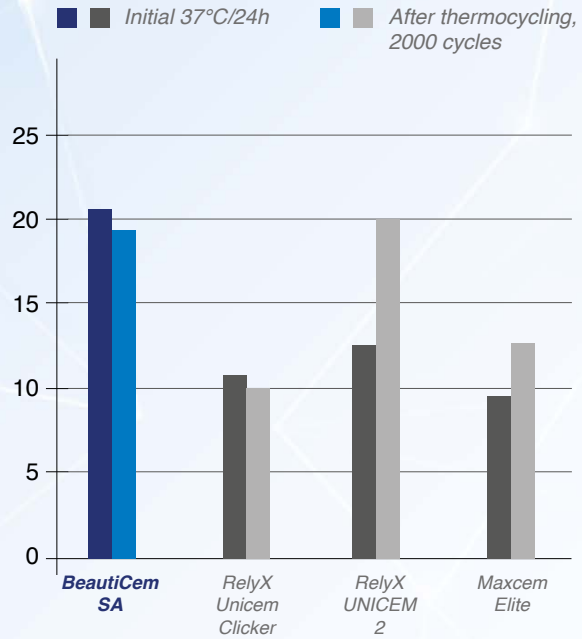


- Durable bond to a range of substrates
- High level of translucency for aesthetic cases
- Maximum resin polymerization imparts superior flexural strength, higher resistance to staining and low solubility
- Optimal viscosity of non-sticky cement enables controlled delivery, accurate placement of the restoration and easy removal of excess cement
- Inherent thixotropicity ensures an even, bubble free layer with just 11.8 μ film thickness for invisible margins
- Assures patient comfort with virtually no post-operative sensitivity
- Effective release of fluoride for sustained anti-cariogenic and anti-bacterial properties

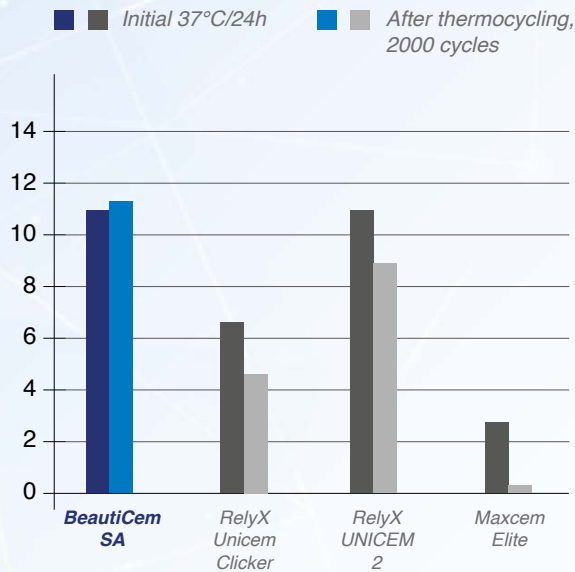
Bonding To Enamel



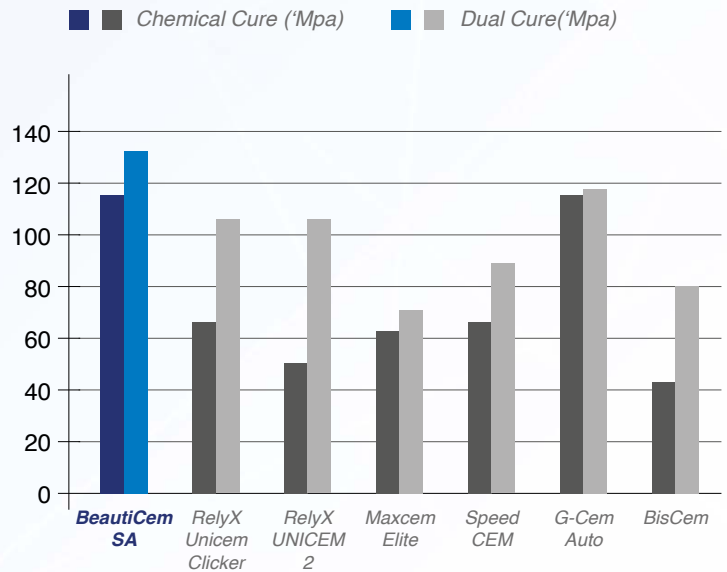
Bonding To Zirconia



Bonding To Dentin



Flexural Strength



*Source: SHOFU R&D (Data on file).

Remarkable Bond Strength

Special dual adhesive monomers provide equally strong bonds to naturally moist tooth substrate (both enamel and dentin) as well as metal, porcelain, all-ceramics and indirect resins.

The novel polymer optimally catalyzes resin polymerization in both chemical as well as dual cure modes, to provide superior mechanical properties for greater endurance to occlusal forces and longevity.

Optimal Aesthetics

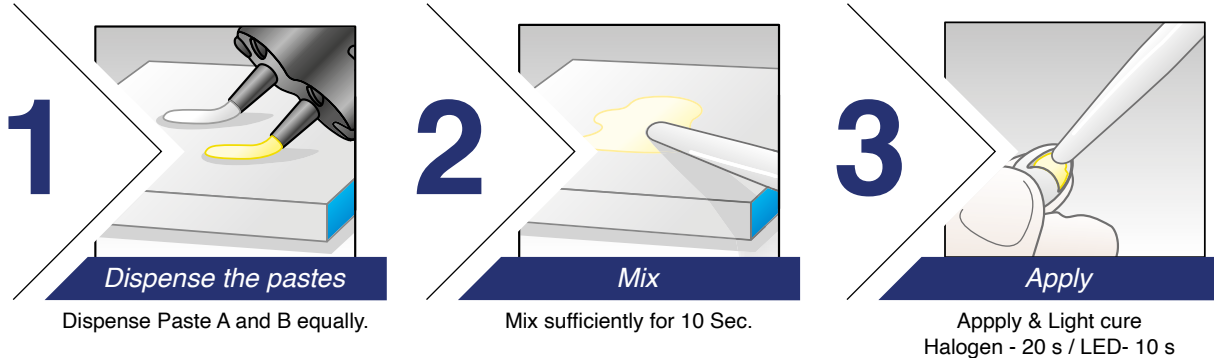
A carefully controlled filler-resin ratio optimizes the refractive index to achieve a high level of translucency for challenging aesthetic cases. Specially formulated polymer catalyst facilitates maximum resin polymerization, for enhanced colour stability, high resistance to marginal discoloration and low solubility in oral fluids.



Dual Delivery Options: Choice of Convenience & Economics

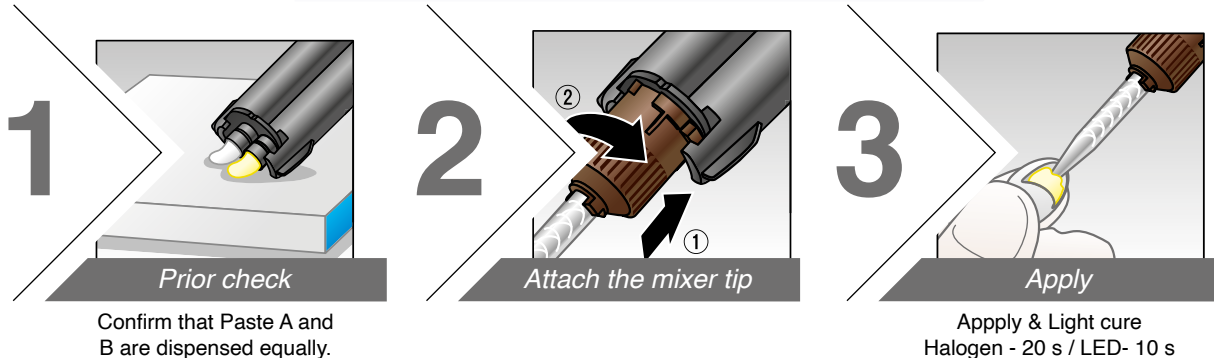
Hand Mix Option

Working time: Within 2 min after mixing



Auto Mix Option

Working time: Within 2 min after extruding the paste from the mixer tip



Order Information

** Storage - To be stored in a refrigerator at 1-10°C /34-50°F.
Avoid high temperature and high humidity. Keep away from direct sunlight and any heat source.



BeautiCem SA – Auto Mixing Syringe 5ml
Mixing Tip X 10 Pcs
Available In: Clear [REF 3213]



BeautiCem SA – Hand-Mixing Syringe 9ml
Available in: Clear [REF 3216]



SHOFU DENTAL ASIA-PACIFIC PTE. LTD.
1 Science Park Road, #01-01 / 02 The Capricorn, Science Park II,
Singapore 117528 Tel: (65) 6377 2722
eMail: mailbx@shofu.com.sg www.shofu.com.sg



BTC20241130