

COAT-IT

Light Cured Resin Coat



COAT-IT

SHOFU COAT-IT is a light-cured self-adhesive resin coat designed to provide a perfect protective seal on the surface of Glass Ionomers for enhanced mechanical properties, durability and aesthetics of the restoration. All it takes is a thin layer of **COAT-IT** to significantly decrease the surface roughness on the Glass Ionomer restoration.

Benefits

Remarkable Surface Gloss

COAT-IT is easily and completely cured to a natural gloss with both LED and Halogen light curing sources within 10 seconds, leaving very little residual uncured monomer.

Exceptionally Strong Bond

COAT-IT exhibits an equally strong adhesion to different substrates such as Enamel, Dentin resin-based temporary restorations and GIC, with virtually no gap, even when observed under high magnification.

Order Information



COAT-IT [REF Y0055]

Related Products

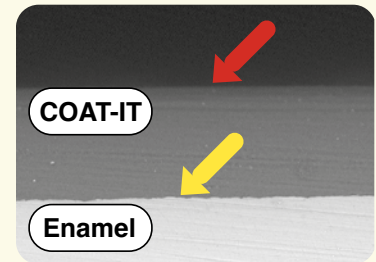


Glaslonomer FX Ultra 1-1 Set

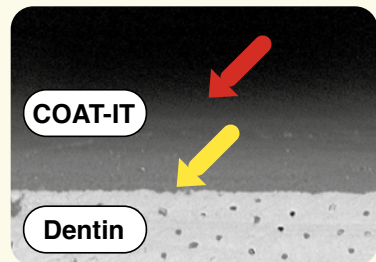


Zirconomer P [REF C0040]

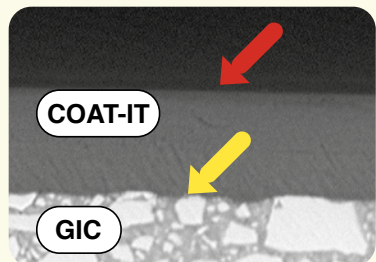
SEAL & PROTECT



A) Adhesive interface between COAT-IT and Enamel



B) Adhesive interface between COAT-IT and Dentin Enamel



C) Adhesive interface between COAT-IT and GIC (Glaslonomer FX Ultra)



SHOFU DENTAL ASIA-PACIFIC PTE. LTD.
1 Science Park Road, #01-01 / 02 The Capricorn, Science Park II,
Singapore 117528 Tel: (65) 6377 2722
eMail: mailbx@shofu.com.sg www.shofu.com.sg



COA20241231