



## *UNI-LAYER* – A Single Layer Solution to Metal-Ceramics





**VINTAGE MP UNI-LAYER** is a revolutionary single layer porcelain system that provides a simple, predictable and economical solution to the modern dental laboratory.

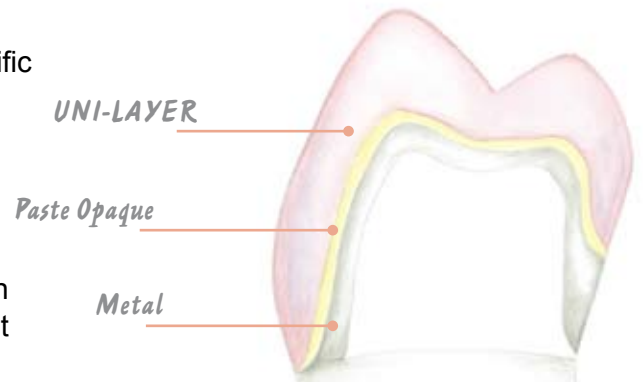
## Wipe out your **daily challenge** with just **a single layer build-up ...**

### *Benefits*

- Improves efficiency by simplifying fabrication with a simple, single layer build-up process
- Dramatically enhances productivity and profitability by saving time and easing the learning curve especially for new technicians
- Dense homogeneous micro-structure of the leucite reinforced feldspathic porcelain assures structural integrity, remarkable mechanical properties and greater fracture resistance. The firing cycle is optimized for a consistent colour match and shade stability.
- Vita\* shades easily attained with **Vintage MP Paste Opaque** that provides the foundation hue while the **UNI-LAYER** porcelain provides the desired level of translucency and opalescence
- Staining with **VINTAGE Art** provides patient-specific individual characterization for life-like restorations

### *Predictable Fabrication Process*

The single layer build-up concept of **UNI-LAYER** porcelain not only produces aesthetic metal-ceramic restorations but assures consistent results with every production cycle.



Paste Opaque Application



UNI-LAYER Build-Up



After Firing, Contouring & Staining

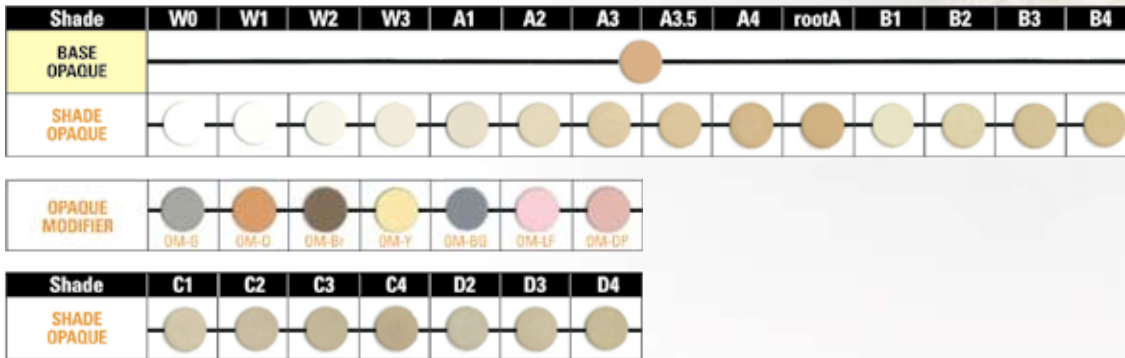


Completed Restoration

## Comprehensive Colour Concept

**UNI-LAYER** porcelain adopts a simple yet comprehensive colour system based on **VINTAGE MP** shades. All the 16 Vita\* Classical shades are easily attained through the combined application of **Comprehensive Colour Concept**.

Foundation Shade: **VINTAGE MP** Paste Opaque in 16 Vita\* Classical shades and additional opaque modifiers impart the desired base shade.



## Reproduction of Vita\* Classical Shades with VINTAGE MP Paste Opaque & UNI-LAYER porcelain

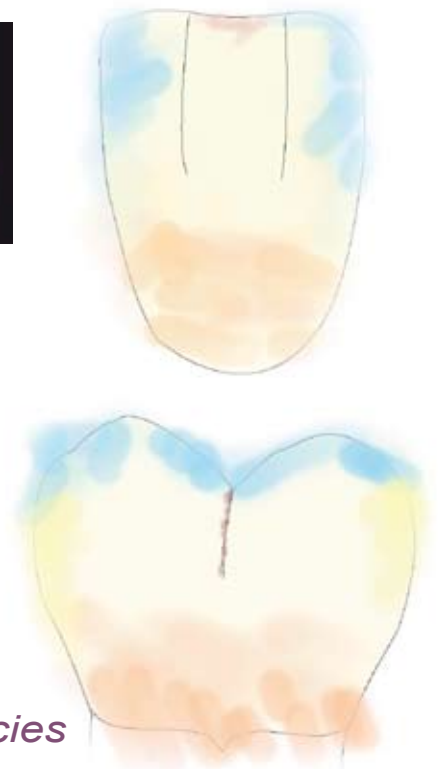


A1

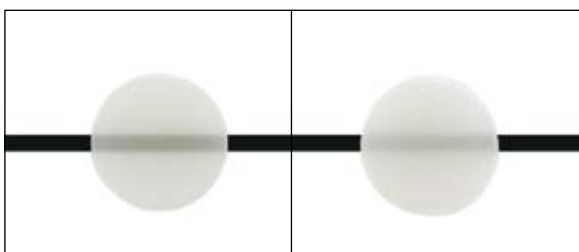
A2

A3

A3.5

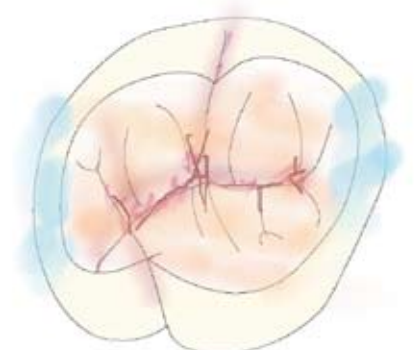


## UNI-LAYER Shades: In Two Unique Translucencies



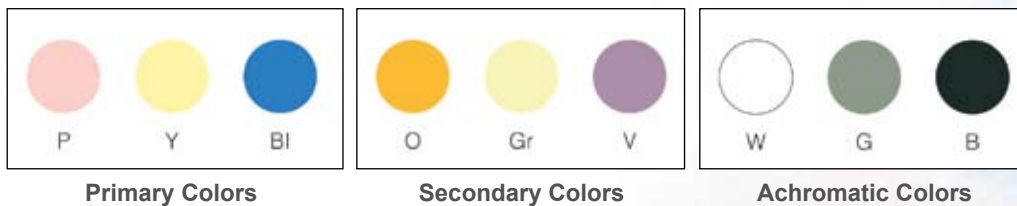
HT  
High Translucent

LT  
Low Translucent



# Individual Characterization with **VINTAGE Art Stains**

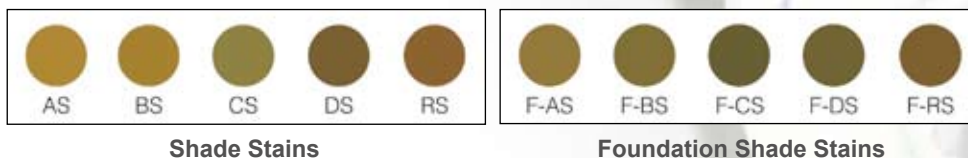
## Base Color Stains



## Color Stains



## Shade Stains



## Order Information



**VINTAGE MP UNI-LAYER SET [PN 9633]**  
 Paste Opaque (5gm): Base, A2O, A3O  
 Uni-Layer (50gm): HT, LT  
 Vintage MP Opaque Liquid (3ml)  
 Vintage Mixing Liquid- HC (50ml)

## Related Products



**VINTAGE Art BASIC COLOUR SET [PN 6510]**



**VINTAGE Art EFFECT COLOUR SET [PN 6511]**



**SHOFU INC.** 11 Kamitakamatsu-cho, Fukuine, Higashiyama-ku, Kyoto 605 - 0983, Japan ([www.shofu.co.jp](http://www.shofu.co.jp))  
**SHOFU DENTAL ASIA-PACIFIC PTE. LTD.** 10 Science Park Road, #03-12 The Alpha, Science Park II, Singapore 117684 ([www.shofu.com.sg](http://www.shofu.com.sg))  
**SHOFU DENTAL SUPPLIES (SHANGHAI) CO. LTD.** No.645 Jiye Road, Sheshan Industry Park Songjiang Shanghai 201602, China ([www.shofu.com.cn](http://www.shofu.com.cn))  
**SHOFU DENTAL CORPORATION** 1225 Stone Drive, San Marcos, CA 92078-4059, USA ([www.shofu.com](http://www.shofu.com))  
**SHOFU DENTAL GmbH** Am Brüll 17, 40878 Ratingen, Germany ([www.shofu.de](http://www.shofu.de))  
**SHOFU UK.** Riverside House, River Lawn Road, Tonbridge, Kent TN9 1EP, United Kingdom ([www.shofu.co.uk](http://www.shofu.co.uk))