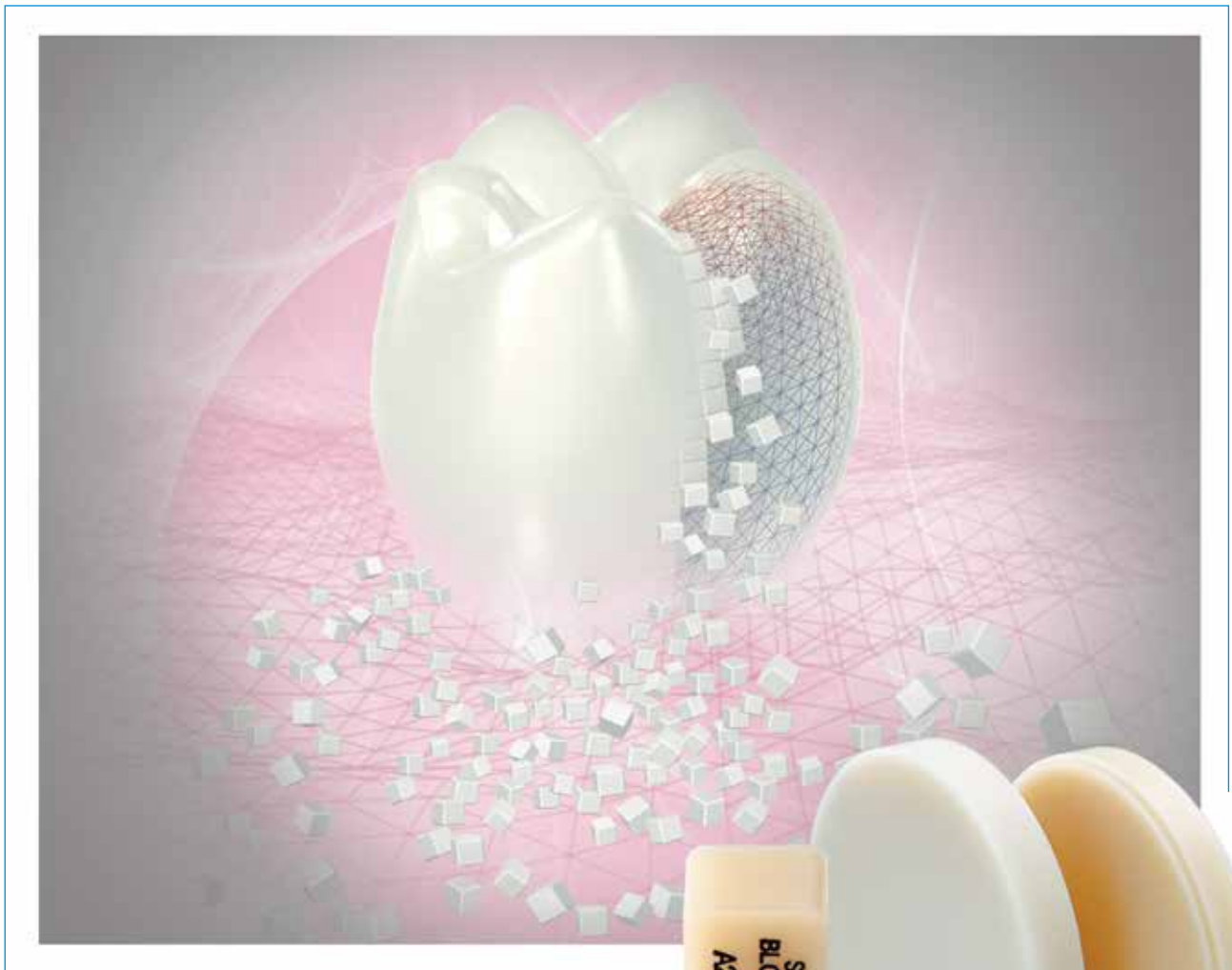


SHOFU BLOCK SHOFU DISK



CAD / CAM Ceramic-based Restorative



SHOFU BLOCK HC SHOFU DISK HC



Creating Life-like HC Restorations

The new generation of CAD / CAM restorative, SHOFU HC Hybrid Ceramic comes with exceptionally natural aesthetics, superior mechanical properties, faster milling and efficient polishing to a natural luster.

Unique filler technology based on decades of experience with Ceramage has provided the know how to develop SHOFU HC Hybrid Ceramic.

A class above in quality, SHOFU HC CAD / CAM restorative is the only one that offers the unique flexibility of the in-office (**SHOFU BLOCK HC**) and in-lab (**SHOFU DISK HC**) versions, enabling you to select exactly what you need for your practice.



HC Benefits...

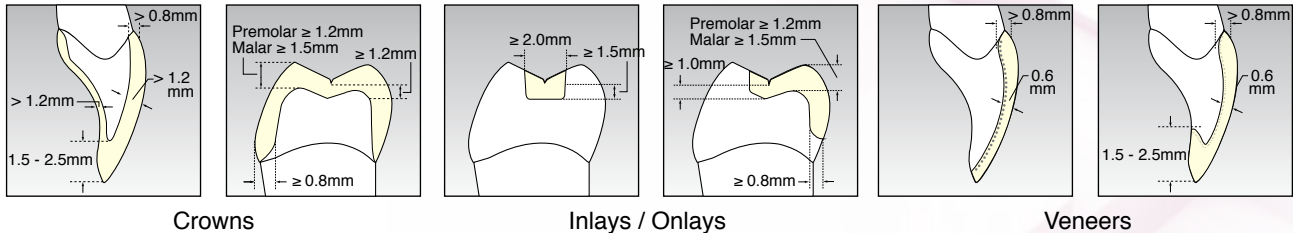
Created through a rigorous manufacturing process, **SHOFU BLOCK / DISK HC** exhibit superior features and consistent quality.

- **Life-like Aesthetics with natural opalescence**
- **Excellent polishability for lasting aesthetics**
- **Remarkable stain resistance**
- **Exceptional wear resistance**
- **Greater flexural strength and shock absorbing ability**



Spectrum of Clinical Applications

- Inlays
- Onlays & Overlays
- Laminate veneers
- Anterior and Posterior full crowns
- Implant supported restorations

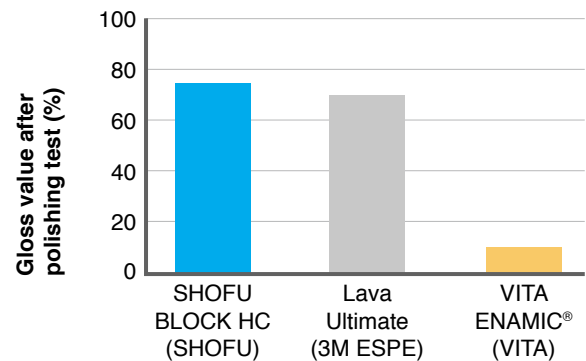


*The abutments must be designed with rounded incisal and cusp areas for more precise milling due to the thickness of CAD / CAM burs (generally 1mm). A deep chamfer or rounded shoulder margins are better for scanning.

Predictable Performance...

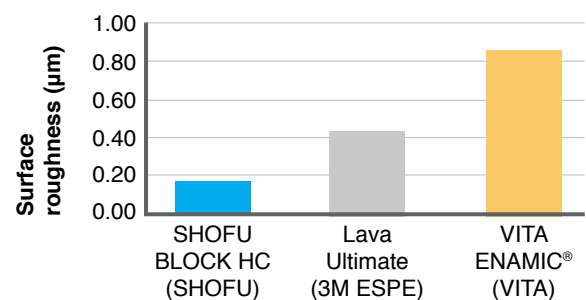
Exceptional Polish

Unique microstructure of **SHOFU BLOCK / DISK HC** ensures the creation of an extremely smooth and durable surface finish in a very short time. With the recommended chair side and intra-oral polishing kits from SHOFU, a natural gloss can be easily achieved in no time.



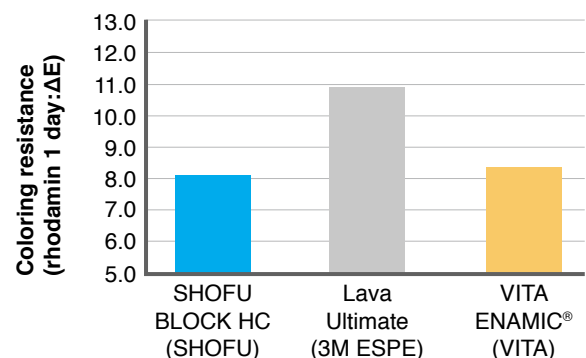
Outstanding Wear Resistance

Considered one of the key requisites for longevity of CAD / CAM restoratives, **SHOFU BLOCK / DISK HC** has a special microarchitecture that imparts outstanding wear resistance and superior gloss retention.



Remarkable Colour Stability

Food and drinks discolour both natural teeth and restorative materials. **SHOFU BLOCK / DISK HC** shows high resistance to staining, for restorations that maintain the original shade and gloss over time.



Shade Range

	W2	A1	A2	A3	A3.5	B3	59	OC
LT Low Translucency								
HT High Translucency								
Enamel								

LT – Low Translucency

Designed to match VITA Classical shades with lower translucency to suit cases of posterior crowns

HT – High Translucency

Designed with higher translucency to suit cases of inlays and anterior crowns

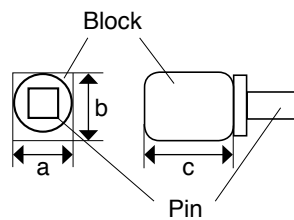
Enamel

Designed to replace the enamel layer, 59 (Incisal) and OC (occlusal)

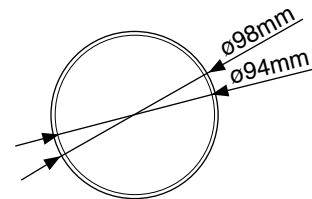
Shape Dimensions (mm)

SHOFU BLOCK HC

Type	Dimension (mm)		
	a	b	c
S	10	12	16
M	12	14	18



SHOFU DISK HC



Availability



SHOFU BLOCK HC

5 blocks each per box; size S and M

SHOFU BLOCK HC Intro Set

10 blocks, 1 each size of S and M, shades A1-HT, A2-HT, A3-HT, A3-LT and OC



SHOFU DISK HC

1 disk each per box; diameter 98mm, thickness 14mm



SHOFU INC. 11 Kamitakamatsu-cho, Fukuine, Higashiyama-ku, Kyoto 605 - 0983, Japan (www.shofu.co.jp)

SHOFU DENTAL ASIA-PACIFIC PTE. LTD. 10 Science Park Road, #03-12 The Alpha, Science Park II, Singapore 117684 (www.shofu.com.sg)

SHOFU DENTAL TRADING (SHANGHAI) CO. LTD. No.645 Jiye Road, Sheshan Industry Park Songjiang Shanghai 201602, China (www.shofu.com.cn)

SHOFU DENTAL CORPORATION 1225 Stone Drive, San Marcos, CA 92078-4059, USA (www.shofu.com)

SHOFU DENTAL GmbH Am Brüll 17, 40878 Ratingen, Germany (www.shofu.de)

SHOFU UK. Riverside House, River Lawn Road, Tonbridge, Kent TN9 1EP, United Kingdom (www.shofu.co.uk)